

ZAXIS-6 series

HITACHI

Reliable solutions

# STRAIGHT BOOM FRONT

A P P L I C A T I O N   &   A T T A C H M E N T



## ZAXIS 250LC/ZAXIS 300LC/ZAXIS 350LC

Model Code	ZX250LC-6 ZX250LCN-6	ZX300LC-6 ZX300LCN-6	ZX350LC-6 ZX350LCN-6
Engine Rated Power	140 kW (ISO14396)	197 kW (ISO14396)	210 kW (ISO14396)
Operating Weight	26 400 - 27 500 kg	30 400 - 31 600 kg	35 600 - 36 800 kg

# SPECIFICATIONS

## ZX250LC / ZX250LCN STRAIGHT BOOM

### ENGINE

Model .....	Isuzu AQ-4HK1X
Type .....	4-cycle water-cooled, common rail direct injection
Aspiration .....	Variable geometry turbocharged, intercooled, cooled EGR
Aftertreatment .....	DOC and SCR system
No. of cylinders .....	4
Rated power	
ISO 14396 .....	140 kW at 2 000 min <sup>-1</sup>
ISO 9249, net .....	132 kW at 2 000 min <sup>-1</sup>
SAE J1349, net .....	132 kW at 2 000 min <sup>-1</sup>
Maximum torque .....	676 Nm at 1 800 min <sup>-1</sup>
Piston displacement .....	5.193 L
Bore and stroke .....	115 mm x 125 mm
Batteries .....	2 x 12 V / 126 Ah

### HYDRAULIC SYSTEM

#### Hydraulic Pumps

Main pumps .....	3 variable displacement axial piston pumps
Maximum oil flow .....	2 x 224 L/min 1 x 200 L/min
Pilot pump .....	1 gear pump
Maximum oil flow .....	35.5 L/min

#### Hydraulic Motors

Travel .....	2 variable displacement axial piston motors
Swing .....	1 axial piston motor

#### Relief Valve Settings

Implement circuit .....	34.3 MPa
Swing circuit .....	32.4 MPa
Travel circuit .....	34.3 MPa
Pilot circuit .....	3.9 MPa
Power boost .....	38.0 MPa

#### Hydraulic Cylinders

	Quantity	Bore	Rod diameter
Boom	2	125 mm	90 mm
Arm	1	140 mm	100 mm
Bucket	1	130 mm	90 mm

### UPPERSTRUCTURE

#### Revolving Frame

D-section frame for resistance to deformation.

#### Swing Device

Axial piston motor with planetary reduction gear is bathed in oil. Swing circle is single-row. Swing parking brake is spring-set/hydraulic-released disc type.

Swing speed .....	11.0 min <sup>-1</sup>
Swing torque .....	77.5 kNm

#### Operator's Cab

Independent spacious cab, 1 005 mm wide by 1 675 mm high, conforming to ISO\* Standards.

\* International Organization for Standardization

### UNDERCARRIAGE

#### Tracks

Heat-treated connecting pins with dirt seals. Hydraulic (grease) track adjusters with shock-absorbing recoil springs.

#### Numbers of Rollers and Shoes on Each Side

Upper rollers .....	2
Lower rollers .....	9
Track shoes .....	51
Track guards .....	3

#### Travel Device

Each track driven by 2-speed axial piston motor. Parking brake is spring-set/hydraulic-released disc type. Automatic transmission system: High-Low.

Travel speeds .....	High : 0 to 5.5 km/h Low : 0 to 3.4 km/h
---------------------	---

Maximum traction force ... 222 kN

Gradeability .....

70% (35 degree) continuous

### SOUND LEVEL

Sound level in cab according to ISO 6396 ..... LpA 67 dB(A)

External sound level according to ISO 6395 and

EU Directive 2000/14/EC ..... LwA 102 dB(A)

### SERVICE REFILL CAPACITIES

Fuel tank .....	510.0 L
Engine coolant .....	31.0 L
Engine oil .....	27.0 L
Swing device .....	9.1 L
Travel device (each side) .....	7.8 L
Hydraulic system .....	280.0 L
Hydraulic oil tank .....	156.0 L
DEF/AdBlue® tank .....	70.0 L

## WEIGHTS AND GROUND PRESSURE

### ZX250LC STRAIGHT BOOM:

Equipped with 6.30 m monoblock boom, 2.96 m arm and 1.00 m<sup>3</sup> bucket (SAE, PCSA heaped), 6 200 kg counterweight.

Shoe type	Shoe width	Operating weight	Ground pressure
Triple grouser	600 mm	26 400 kg	66 kPa (0.68 kgf/cm <sup>2</sup> )
	700 mm	26 700 kg	57 kPa (0.59 kgf/cm <sup>2</sup> )
	800 mm	27 000 kg	50 kPa (0.53 kgf/cm <sup>2</sup> )
	900 mm	27 500 kg	46 kPa (0.47 kgf/cm <sup>2</sup> )

### ZX250LCN STRAIGHT BOOM:

Equipped with 6.30 m straight boom, 2.96 m arm and 1.00 m<sup>3</sup> bucket (SAE, PCSA heaped), 6 200 kg counterweight.

Shoe type	Shoe width	Operating weight	Ground pressure
Triple grouser	600 mm	26 300 kg	65 kPa (0.67 kgf/cm <sup>2</sup> )
	700 mm	26 600 kg	57 kPa (0.59 kgf/cm <sup>2</sup> )
	800 mm	26 900 kg	50 kPa (0.53 kgf/cm <sup>2</sup> )
	900 mm	27 500 kg	46 kPa (0.47 kgf/cm <sup>2</sup> )

## Components weight

	Weight
Counterweight	6 200 kg
Straight boom (with arm cylinder)	4 215 kg
2.96 m arm (with bucket cylinder)	1 320 kg
1.00 m <sup>3</sup> bucket	850 kg

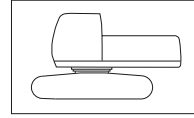
## BUCKET AND ARM DIGGING FORCE

### ZAXIS 250LC / ZAXIS 250LCN

Arm length	2.96 m
Bucket digging force* ISO	188 kN (19 200 kgf)
Bucket digging force* SAE : PCSA	163 kN (16 600 kgf)
Arm crowd force* ISO	131 kN (13 300 kgf)
Arm crowd force* SAE : PCSA	126 kN (12 900 kgf)

\* At power boost

## Basic Machine Weight and Overall width



Excluding front end attachment, fuel, hydraulic oil and coolant etc.

Including counterweight.

### ZX250LC

Shoe width	Weight	Overall width
600 mm	21 000 kg	3 190 mm
700 mm	21 300 kg	3 290 mm
800 mm	21 600 kg	3 390 mm
900 mm	22 100 kg	3 490 mm

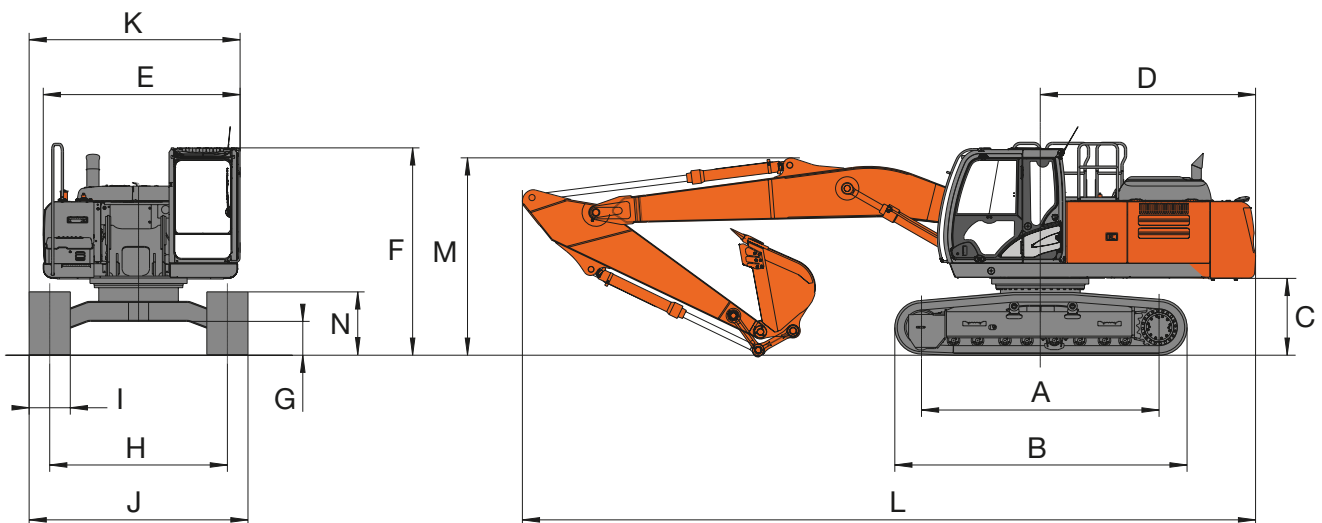
### ZX250LCN

Shoe width	Weight	Overall width
600 mm	20 900 kg	2 990 mm
700 mm	21 200 kg	3 090 mm
800 mm	21 500 kg	3 190 mm
900 mm	22 000 kg	3 290 mm

# SPECIFICATIONS

## ZX250LC / ZX250LCN STRAIGHT BOOM

### DIMENSIONS

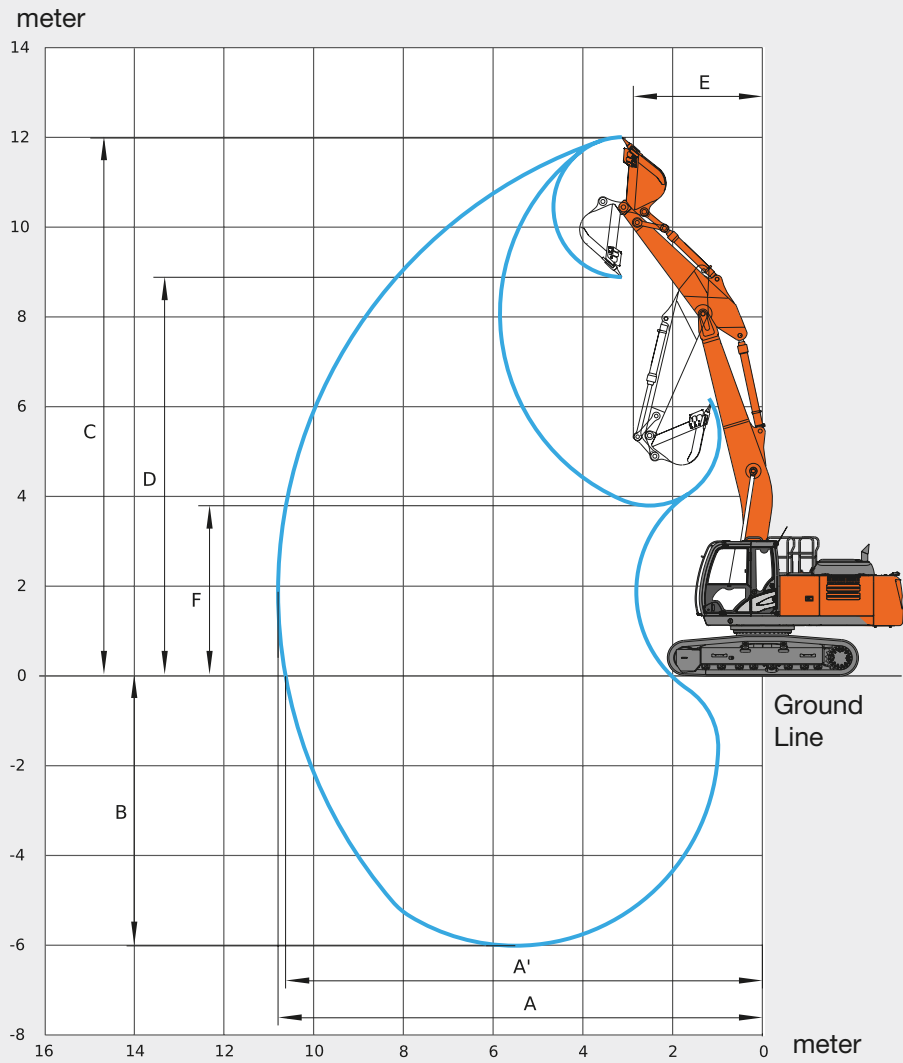


Unit: mm

	ZX250LC STRAIGHT BOOM	ZX250LCN STRAIGHT BOOM
A Distance between tumbler	3 845	3 845
B Undercarriage length	4 640	4 640
*C Counterweight clearance	1 080	1 080
D Rear-end swing radius	3 140	3 140
E Overall width of upperstructure	2 870	2 870
F Overall height of cab	3 010	3 010
*G Min. ground clearance	460	460
H Track gauge	2 590	2 390
I Track shoe width	600 / 700 / 800 / 900	600 / 700 / 800 / 900
J Undercarriage width	3 190 / 3 290 / 3 390 / 3 490	2 990 / 3 090 / 3 190 / 3 290
K Overall width	3 190 / 3 290 / 3 390 / 3 490	2 990 / 3 090 / 3 190 / 3 290
L Overall length	10 690	10 690
M Overall height of boom	2 990	2 990
N Track height with triple grouser shoes	920	920

•\*: Excluding track shoe lug

## WORKING RANGES



Unit: mm

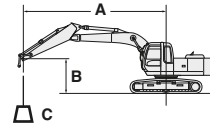
		ZX250LC / ZX250LCN STRAIGHT BOOM
A	Max. digging reach	10 800
A'	Max. digging reach (on ground)	10 625
B	Max. digging depth	6 030
C	Max. cutting height	11 990
D	Max. dumping height	8 870
E	Min. swing radius	2 880
F	Min. dumping height	3 800

- Excluding track shoe lug

# LIFTING CAPACITIES

## Metric measure

- Notes: 1. Ratings are based on ISO 10567.  
 2. Lifting capacity of the ZAXIS series does not exceed 75% of tipping load with the machine on firm, level ground or 87% full hydraulic capacity.  
 3. The load point is the center-line of the bucket pivot mounting pin on the arm.  
 4. \* Indicates load limited by hydraulic capacity.  
 5. 0 m = Ground.  
 For lifting capacities, subtract bucket and quick hitch weight from lifting capacities.



A: Load radius  
 B: Load point height  
 C: Lifting capacity

### ZX250LC-6B STRAIGHT BOOM

Rating over-front Rating over-side or 360 degrees Unit: 1 000 kg

Conditions	Load point height m	Load radius m									
		3.0		4.0		5.0		6.0		7.0	
Boom 6.30 m Arm 2.96 m Counterweight 6 200 kg Shoe 600 mm	10.0			7.78*	7.58*						
	9.0					6.43*	6.43*				
	8.0					6.20*	6.20*	5.83*	5.83*		
	7.0					6.32*	6.32*	5.82*	5.82*	5.49*	5.49*
	6.0			6.08*	6.08*	6.70*	6.70*	6.03*	6.03*	5.55*	5.55*
	5.0	8.84*	8.84*	8.29*	8.29*	7.32*	7.32*	6.39*	6.39*	5.74*	5.59
	4.0			10.17*	10.17*	8.09*	8.09*	6.84*	6.84*	6.00*	5.47
	3.0					8.86*	8.72	7.30*	6.69	6.28*	5.34
	2.0					9.43*	8.40	7.67*	6.49	6.51*	5.21*
	1.0					9.69*	8.19	7.89*	6.34	6.64*	5.11
	0 (Ground)			5.95*	5.95*	9.60*	8.09	7.89*	6.25	6.63*	5.05
	-1.0			8.75*	8.75*	9.21*	8.08	7.66*	6.22	6.43*	5.03
	-2.0	7.42*	7.42*	10.08*	10.08*	8.53*	8.13	7.16*	6.25	5.59*	5.05
-3.0	9.77*	9.77*	8.76*	8.76*	7.53*	7.53*	6.35*	6.32	5.21*	5.12	
-4.0			7.02*	7.02*	6.11*	6.11*	5.07*	5.07*	3.70*	3.70*	

Conditions	Load point height m	Load radius m				At max. reach		
		8.0		9.0				meter
Boom 6.30 m Arm 2.96 m Counterweight 6 200 kg Shoe 600 mm	10.0					7.20*	7.20*	4.2
	9.0					5.94*	5.94*	5.8
	8.0					5.36*	5.36*	6.9
	7.0					5.08*	4.88	7.6
	6.0	5.23*	4.53			4.89*	4.29	8.2
	5.0	5.28*	4.51			4.87*	3.93	8.7
	4.0	5.41*	4.45			4.84*	3.68	9.0
	3.0	5.55*	4.37	4.98*	3.64	4.89*	3.54	9.2
	2.0	5.67*	4.30	4.99*	3.61	4.83*	3.48	9.2
	1.0	5.72*	4.24	4.93*	3.59	4.76*	3.48	9.2
	0 (Ground)	5.65*	4.20	4.72*	3.58	4.69*	3.57	9.0
	-1.0	5.41*	4.20			4.56*	3.73	8.8
	-2.0	4.88*	4.23			4.38*	4.01	8.4
-3.0					4.09*	4.09*	7.8	
-4.0					3.58*	3.58*	7.1	

### ZX250LCN-6B STRAIGHT BOOM

Rating over-front Rating over-side or 360 degrees Unit: 1 000 kg

Conditions	Load point height m	Load radius m									
		3.0		4.0		5.0		6.0		7.0	
Boom 6.30 m Arm 2.96 m Counterweight 6 200 kg Shoe 600 mm	10.0			7.58*	7.58*						
	9.0					6.43*	6.43*				
	8.0					6.20*	6.20*	5.83*	5.83*		
	7.0					6.32*	6.32*	5.82*	5.82*	5.49*	5.26
	6.0			6.08*	6.08*	6.70*	6.70*	6.03*	6.03*	5.55*	5.24
	5.0	8.84*	8.84*	8.29*	8.29*	7.32*	7.32*	6.39*	6.39*	5.74*	5.15
	4.0			10.17*	10.17*	8.09*	8.09*	6.84*	6.35	6.00*	5.04
	3.0					8.86*	7.97	7.30*	6.14	6.28*	4.91
	2.0					9.43*	7.66	7.67*	5.95	6.51*	4.79
	1.0					9.69*	7.46	7.89*	5.80	6.64*	4.69
	0 (Ground)			5.95*	5.95*	9.60*	7.36	7.89*	5.71	6.63*	4.63
	-1.0			8.75*	8.75*	9.21*	7.35	7.66*	5.69	6.43*	4.61
	-2.0	7.42*	7.42*	10.08*	10.08*	8.53*	7.40	7.16*	5.71	5.99*	4.63
-3.0	9.77*	9.77*	8.76*	8.76*	7.53*	7.50	6.35*	5.78	5.21*	4.70	
-4.0			7.02*	7.02*	6.11*	6.11*	5.07*	5.07*	3.70*	3.70*	

Conditions	Load point height m	Load radius m				At max. reach		
		8.0		9.0				meter
Boom 6.30 m Arm 2.96 m Counterweight 6 200 kg Shoe 600 mm	10.0					7.20*	7.20*	4.2
	9.0					5.94*	5.94*	5.8
	8.0					5.36*	5.36*	6.9
	7.0					5.08*	4.50	7.6
	6.0	5.23*	4.18			4.89*	3.96	8.2
	5.0	5.28*	4.16			4.87*	3.62	8.7
	4.0	5.41*	4.10			4.84*	3.39	9.0
	3.0	5.55*	4.02	4.98*	3.35	4.89*	3.25	9.2
	2.0	5.67*	3.95	4.99*	3.32	4.83*	3.19	9.2
	1.0	5.72*	3.89	4.93*	3.29	4.76*	3.20	9.2
	0 (Ground)	5.65*	3.86	4.72*	3.29	4.69*	3.27	9.0
	-1.0	5.41*	3.85			4.56*	3.43	8.8
	-2.0	4.88*	3.89			4.38*	3.69	8.4
-3.0					4.09*	4.09*	7.8	
-4.0					3.58*	3.58*	7.1	

# EQUIPMENT

## ZX250LC / ZX250LCN STRAIGHT BOOM

● : Standard equipment

○ : Optional equipment

### ENGINE

Aftertreatment device	●
Air cleaner double filters	●
Alternator 50 A	●
Auto idle system	●
Auto shut-down control	●
Cartridge-type engine oil filter	●
Cartridge-type fuel main filter	●
Cold fuel resistance valve	●
DEF/AdBlue® tank inlet strainer and extension filter	●
DEF/AdBlue® tank with ISO magnet adapter	●
Dry-type air filter with evacuator valve (with air filter restriction indicator)	●
Dust-proof indoor net	●
ECO/PWR mode control	●
Electrical fuel feed pump	●
Engine oil drain coupler	●
Expansion tank	●
Fan guard	●
Fuel cooler	●
Fuel pre-filter with water separator	●
Isolation-mounted engine	●
Maintenance free pre-cleaner	○
Radiator, oil cooler and intercooler	●

### HYDRAULIC SYSTEM

Auto power lift	●
Control valve with main relief valve	●
Full-flow filter	●
High mesh full flow filter with restriction indicator	○
Hose rupture valve for arm	●
Hose rupture valve for boom	●
Pilot filter	●
Power boost	●
Suction filter	●
Swing dampener valve	●
Two extra port for control valve	●
Variable reliefvalve for breaker & crusher	●
Work mode selector	●

### CAB

All-weather sound suppressed steel cab	●
AM-FM radio	●
Ashtray	●
Auto control air conditioner	●
AUX function lever (Breaker assist)	○
AUX terminal and storage	●
Cigarette lighter 24 V	●
CRES V (Center pillar reinforced structure) cab	●
Drink holder with hot & cool function	●
Electric double horn	●
Engine shut-off switch	●
Equipped with reinforced, tinted (green color) glass windows	●
Evacuation hammer	●
Floor mat	●
Footrest	●
Front window washer	●
Glove compartment	●
Hot & cool box	●
Intermittent windshield wipers	●
Key cylinder light	●
Laminated round glass window	○
LED room light with door courtesy	●
OPG front guard Level II (ISO10262) compliant cab	○
OPG top guard Level I (ISO10262) compliant cab	●
OPG top guard Level II (ISO10262) compliant cab	○
Pilot control shut-off lever	●
Power outlet 12 V	○
Rain guard	○
Rear tray	●
Retractable seat belt	●
ROPS (ISO12117-2) compliant cab	●
Rubber radio antenna	●
Seat : air suspension seat with heater	●
Seat adjustment part : backrest, armrest, height and angle, slide forward / back	●
Short wrist control levers	●
Sun visor (front window/side window)	○
Transparent roof with slide curtain	●
Windows on front, upper, lower and left side can be opened	●
2 speakers	●
4 fluid-filled elastic mounts	●

### MONITOR SYSTEM

Alarms: overheat, engine warning, engine oil pressure, alternator, minimum fuel level, hydraulic filter restriction, air filter restriction, work mode, overload, SCR system trouble, etc	●
Alarm buzzers: overheat, engine oil pressure, overload, SCR system trouble	●
Display of meters: water temperature, hour, fuel rate, clock, DEF/AdBlue® rate	●
Other displays: work mode, auto-idle, glow, rearview monitor, operating conditions, etc	●
32 languages selection	●

### LIGHTS

Additional cab roof front lights	○
Additional cab roof rear lights	○
Additional boom light with cover	○
Rotating lamp	○
2 working lights	●

### UPPER STRUCTURE

Batteries 2 x 126 Ah	●
Battery disconnect switch	●
Body top handrail	●
Counterweight 6 200 kg	●
Electric fuel refilling pump with auto stop and filter	●
Fuel level float	●
Hydraulic oil level gauge	●
Lockable fuel refilling cap	●
Lockable machine covers	●
Lockable tool box	●
Platform handrail	●
Rear view camera	●
Rear view mirror (right & left side)	●
Skid-resistant plates and handrails	●
Swing parking brake	●
Undercover	●
Utility space	●

### UNDERCARRIAGE

Bolt-on sprocket	●
Reinforced track links with pin seals	●
Shoe: 600 mm triple grouser	●
Track undercover	○
Travel direction mark on track frame	●
Travel motor covers	●
Travel parking brake	●
Upper and lower rollers	●
3 track guards (each side) and hydraulic track adjuster	●
4 tie down hooks	●

### FRONT ATTACHMENTS

Casted bucket link A	●
Centralized lubrication system	●
Dirt seal on all bucket pins	●
Flanged pin	●
HN bushing	●
Reinforced resin thrust plate	●
WC (tungsten-carbide) thermal spraying	●
Welded bucket link A	○

### ATTACHMENTS

Accessories for 2 speed selector	○
Additional pump (30 L/min)	○
Assist piping	○
Attachment basic piping	●
Breaker and crusher piping	●
Parts for breaker and crusher	●
Pilot accumulator	○

### MISCELLANEOUS

Global e-Service	●
Onboard information controller	●
Standard tool kit	●

Standard and optional equipment may vary by country, so please consult your Hitachi dealer for details.

\* Hitachi Construction Machinery cannot be held liable for theft, any system will just minimize the risk of theft.

# SPECIFICATIONS

## ZX300LC / ZX300LCN STRAIGHT BOOM

### ENGINE

Model .....	Isuzu AQ-6HK1X
Type .....	4-cycle water-cooled, common rail direct injection
Aspiration .....	Variable geometry turbocharged, intercooled, cooled EGR
Aftertreatment .....	DOC and SCR system
No. of cylinders .....	6
Rated power	
ISO 14396 .....	197 kW at 1 900 min <sup>-1</sup>
ISO 9249, net .....	186 kW at 1 900 min <sup>-1</sup>
SAE J1349, net .....	186 kW at 1 900 min <sup>-1</sup>
Maximum torque .....	1 050 Nm at 1 500 min <sup>-1</sup>
Piston displacement .....	7.790 L
Bore and stroke .....	115 mm x 125 mm
Batteries .....	2 x 12 V / 135 Ah

### HYDRAULIC SYSTEM

#### Hydraulic Pumps

Main pumps .....	3 variable displacement axial piston pumps
Maximum oil flow .....	2 x 235 L/min 1 x 211 L/min
Pilot pump .....	1 gear pump
Maximum oil flow .....	36.4 L/min

#### Hydraulic Motors

Travel .....	2 variable displacement axial piston motors
Swing .....	1 axial piston motor

#### Relief Valve Settings

Implement circuit .....	34.3 MPa
Swing circuit .....	32.4 MPa
Travel circuit .....	34.3 MPa
Pilot circuit .....	3.9 MPa
Power boost .....	38.0 MPa

#### Hydraulic Cylinders

	Quantity	Bore	Rod diameter
Boom	2	135 mm	95 mm
Arm	1	150 mm	105 mm
Bucket	1	135 mm	90 mm

### UPPERSTRUCTURE

#### Revolving Frame

D-section frame for resistance to deformation.

#### Swing Device

Axial piston motor with planetary reduction gear is bathed in oil. Swing circle is single-row. Swing parking brake is spring-set/hydraulic-released disc type.

Swing speed .....	10.3 min <sup>-1</sup>
Swing torque .....	90.5 kNm

#### Operator's Cab

Independent spacious cab, 1 005 mm wide by 1 675 mm high, conforming to ISO\* Standards.

\* International Organization for Standardization

### UNDERCARRIAGE

#### Tracks

Heat-treated connecting pins with dirt seals. Hydraulic (grease) track adjusters with shock-absorbing recoil springs.

#### Numbers of Rollers and Shoes on Each Side

Upper rollers .....	2
Lower rollers .....	8
Track shoes .....	48
Track guards .....	3

#### Travel Device

Each track driven by 2-speed axial piston motor. Parking brake is spring-set/hydraulic-released disc type. Automatic transmission system: High-Low.

Travel speeds .....	High : 0 to 5.2 km/h Low : 0 to 3.1 km/h
---------------------	---

Maximum traction force ... 246 kN

Gradeability .....

70% (35 degree) continuous
----------------------------

### SOUND LEVEL

Sound level in cab according to ISO 6396 ..... LpA 69 dB(A)

External sound level according to ISO 6395 and

EU Directive 2000/14/EC ..... LwA 105 dB(A)

### SERVICE REFILL CAPACITIES

Fuel tank .....	510.0 L
Engine coolant .....	46.0 L
Engine oil .....	48.0 L
Swing device .....	12.0 L
Travel device (each side) .....	9.2 L
Hydraulic system .....	294.0 L
Hydraulic oil tank .....	156.0 L
DEF/AdBlue® tank .....	70.0 L



## WEIGHTS AND GROUND PRESSURE

### ZX300LC STRAIGHT BOOM:

Equipped with 6.50 m straight boom, 3.11 m arm and 1.10 m<sup>3</sup> bucket (SAE, PCSA heaped), 5 600 kg counterweight.

Shoe type	Shoe width	Operating weight	Ground pressure
Triple grouser	600 mm	30 400 kg	65 kPa (0.67 kgf/cm <sup>2</sup> )
	700 mm	30 800 kg	56 kPa (0.58 kgf/cm <sup>2</sup> )
	800 mm	31 200 kg	50 kPa (0.52 kgf/cm <sup>2</sup> )
	900 mm	31 600 kg	46 kPa (0.47 kgf/cm <sup>2</sup> )

### ZX300LCN STRAIGHT BOOM:

Equipped with 6.50 m straight boom, 3.11 m arm and 1.10 m<sup>3</sup> bucket (SAE, PCSA heaped), 5 600 kg counterweight.

Shoe type	Shoe width	Operating weight	Ground pressure
Triple grouser	600 mm	30 200 kg	65 kPa (0.67 kgf/cm <sup>2</sup> )
	700 mm	30 600 kg	56 kPa (0.58 kgf/cm <sup>2</sup> )
	800 mm	31 000 kg	50 kPa (0.52 kgf/cm <sup>2</sup> )
	900 mm	31 400 kg	45 kPa (0.46 kgf/cm <sup>2</sup> )

### Components weight

	Weight
Counterweight	5 600 kg
Straight boom (with arm cylinder)	2 820 kg
3.11 m arm (with bucket cylinder)	1 430 kg
1.10 m <sup>3</sup> bucket	900 kg

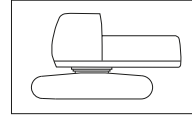
## BUCKET AND ARM DIGGING FORCE

### ZAXIS 300LC / ZAXIS 300LCN

Arm length	3.11 m
Bucket digging force* ISO	202 kN (20 600 kgf)
Bucket digging force* SAE : PCSA	175 kN (17 900 kgf)
Arm crowd force* ISO	144 kN (14 700 kgf)
Arm crowd force* SAE : PCSA	138 kN (14 100 kgf)

\* At power boost

### Basic Machine Weight and Overall width



Excluding front end attachment, fuel, hydraulic oil and coolant etc.

Including counterweight.

#### ZX300LC

Shoe width	Weight	Overall width
600 mm	23 800 kg	3 190 mm
700 mm	24 100 kg	3 290 mm
800 mm	24 500 kg	3 390 mm
900 mm	24 900 kg	3 490 mm

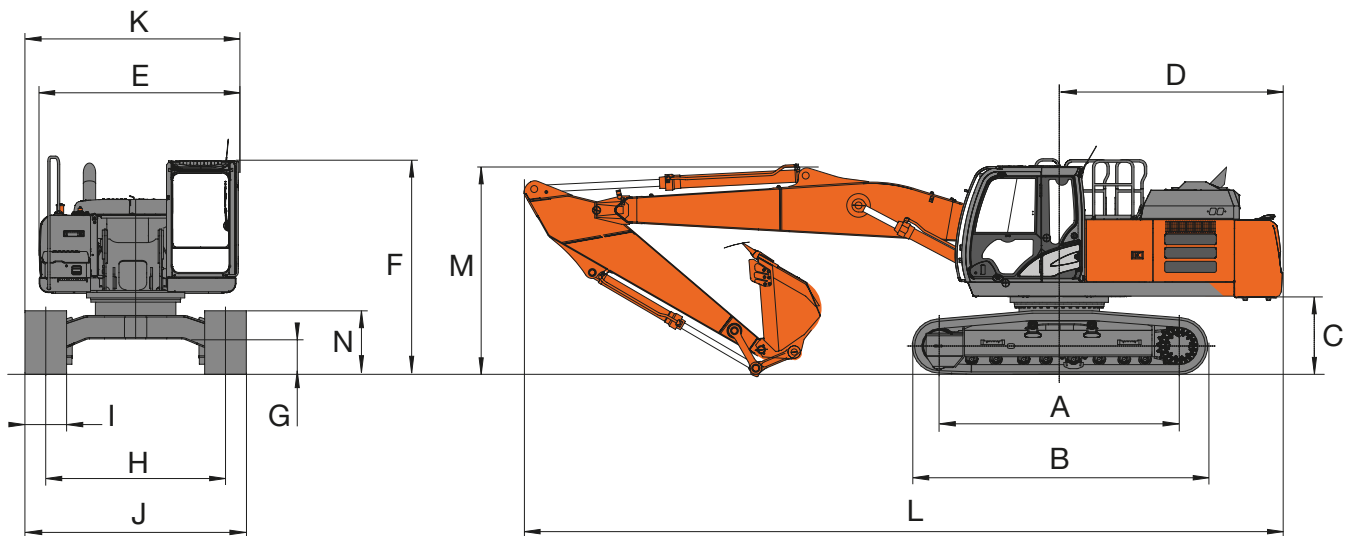
#### ZX300LCN

Shoe width	Weight	Overall width
600 mm	23 600 kg	2 990 mm
700 mm	24 000 kg	3 090 mm
800 mm	24 400 kg	3 190 mm
900 mm	24 800 kg	3 290 mm

# SPECIFICATIONS

## ZX300LC / ZX300LCN STRAIGHT BOOM

### DIMENSIONS

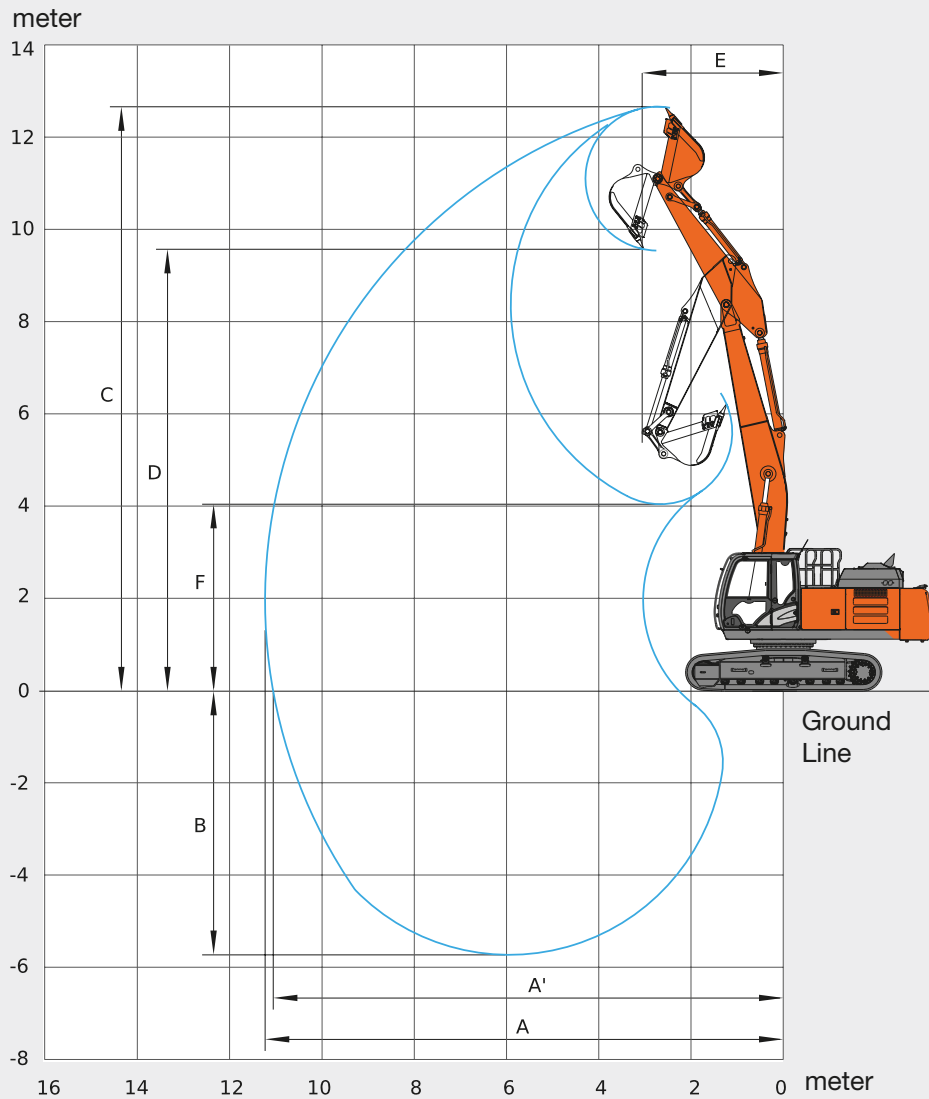


Unit: mm

	ZX300LC STRAIGHT BOOM	ZX300LCN STRAIGHT BOOM
A Distance between tumbler	4 050	4 050
B Undercarriage length	4 940	4 940
*C Counterweight clearance	1 130	1 130
D Rear-end swing radius	3 210	3 210
E Overall width of upperstructure	2 990	2 990
F Overall height of cab	3 120	3 120
*G Min. ground clearance	510	510
H Track gauge	2 590	2 390
I Track shoe width	600 / 700 / 800 / 900	600 / 700 / 800 / 900
J Undercarriage width	3 190 / 3 290 / 3 390 / 3 490	2 990 / 3 090 / 3 190 / 3 290
K Overall width	3 190 / 3 290 / 3 390 / 3 490	2 990 / 3 090 / 3 190 / 3 290
L Overall length	10 930	10 930
M Overall height of boom	3 030	3 030
N Track height with triple grouser shoes	1 070	1 070

•\* : Excluding track shoe lug

## WORKING RANGES



Unit: mm

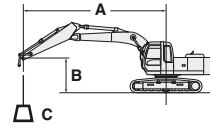
		ZX300LC / ZX300LCN STRAIGHT BOOM
A	Max. digging reach	11 240
A'	Max. digging reach (on ground)	11 060
B	Max. digging depth	5 720
C	Max. cutting height	12 680
D	Max. dumping height	9 590
E	Min. swing radius	3 060
F	Min. dumping height	4 060

- Excluding track shoe lug

# LIFTING CAPACITIES

## Metric measure

- Notes:
1. Ratings are based on ISO 10567.
  2. Lifting capacity of the ZAXIS series does not exceed 75% of tipping load with the machine on firm, level ground or 87% full hydraulic capacity.
  3. The load point is the center-line of the bucket pivot mounting pin on the arm.
  4. \* Indicates load limited by hydraulic capacity.
  5. 0 m = Ground.
- For lifting capacities, subtract bucket and quick hitch weight from lifting capacities.



A: Load radius  
B: Load point height  
C: Lifting capacity

### ZX300LC STRAIGHT BOOM

Rating over-front Rating over-side or 360 degrees Unit: 1 000 kg

Conditions	Load point height m	Load radius m									
		3.0		4.0		5.0		6.0		7.0	
Boom 6.50 m	11.0	9.90*	9.90*								
Arm 3.10 m	10.0			8.75*	8.75*	7.68*	7.68*				
Counterweight	9.0					7.92*	7.92*	7.49*	7.49*		
6 500 kg	8.0					7.40*	7.40*	7.67*	7.67*	7.11*	6.26
Shoe 600 mm	7.0					7.18*	7.18*	7.65*	7.65*	7.12*	6.29
	6.0			6.88*	6.88*	7.62*	7.62*	8.05*	8.05*	7.25*	6.22
	5.0			10.19*	10.19*	9.63*	9.63*	8.47*	7.77	7.47*	6.09
	4.0					10.69*	9.88	8.94*	7.50	7.74*	5.93
	3.0					11.41*	9.39	9.36*	7.21	7.98*	5.75
	2.0					11.81*	8.99	9.64*	6.96	8.14*	5.59
	1.0					11.79*	8.74	9.68*	6.77	8.15*	5.46
	0 (Ground)					11.34*	8.62	9.44*	6.66	7.96*	5.38
	-1.0			8.67*	8.67*	10.53*	8.61	8.91*	6.62	7.53*	5.35
	-2.0	7.56*	7.56*	10.59*	10.59*	9.39*	8.67	8.05*	6.65	6.80*	5.37
	-3.0			8.68*	8.68*	7.88*	7.88*	6.82*	6.74	5.67*	5.44
	-4.0					5.90*	5.90*	5.08*	5.08*		

Conditions	Load point height m	Load radius m				At max. reach		
		8.0		9.0				meter
Boom 6.50 m	11.0					9.59*	9.59*	3.1
Arm 3.10 m	10.0					6.76*	6.76*	5.2
Counterweight	9.0					5.75*	5.75*	6.6
6 500 kg	8.0					5.25*	5.25*	7.5
Shoe 600 mm	7.0	6.24*	4.96			4.95	4.69	8.2
	6.0	7.52*	4.97			4.72*	4.18	8.8
	5.0	6.72*	4.91	5.96*	4.00	4.65*	3.85	9.2
	4.0	6.86*	4.81	6.14*	3.97	4.60*	3.64	9.5
	3.0	6.97*	4.71	6.15*	3.92	4.69*	3.52	9.6
	2.0	7.03*	4.61	6.11*	3.86	4.75*	3.46	9.7
	1.0	6.98*	4.52	5.97*	3.82	4.93*	3.47	9.6
	0 (Ground)	6.76*	4.47	5.65*	3.80	4.96*	3.56	9.5
	-1.0	6.33*	4.46	5.02*	3.82	4.64*	3.73	9.2
	-2.0	5.57*	4.49			4.19*	4.00	8.8
	-3.0	4.23*	4.23*			3.56*	3.56*	8.3
	-4.0							

### ZX300LCN STRAIGHT BOOM

Rating over-front Rating over-side or 360 degrees Unit: 1 000 kg

Conditions	Load point height m	Load radius m									
		3.0		4.0		5.0		6.0		7.0	
Boom 6.50 m	11.0	9.90*	9.90*								
Arm 3.10 m	10.0			8.75*	8.75*	7.68*	7.68*				
Counterweight	9.0					7.92*	7.92*	7.49*	7.49*		
6 500 kg	8.0					7.40*	7.40*	7.67*	7.67*	7.11*	6.24
Shoe 600 mm	7.0					7.18*	7.18*	7.65*	7.65*	7.12*	6.26
	6.0			6.88*	6.88*	7.62*	7.62*	8.05*	7.97	7.25*	6.19
	5.0			10.19*	10.19*	9.63*	9.63*	8.47*	7.74	7.47*	6.07
	4.0					10.69*	9.84	8.94*	7.46	7.74*	5.90
	3.0					11.41*	9.35	9.36*	7.18	7.98*	5.72
	2.0					11.81*	8.95	9.64*	6.92	8.14*	5.56
	1.0					11.79*	8.70	9.68*	6.74	8.15*	5.43
	0 (Ground)					11.34*	8.58	9.44*	6.63	7.96*	5.35
	-1.0			8.67*	8.67*	10.53*	8.57	8.91*	6.59	7.53*	5.32
	-2.0	7.56*	7.56*	10.59*	10.59*	9.39*	8.63	8.05*	6.61	6.80*	5.34
	-3.0			8.68*	8.68*	7.88*	7.88*	6.82*	6.70	5.67*	5.42
	-4.0					5.90*	5.90*	5.08*	5.08*		

Conditions	Load point height m	Load radius m				At max. reach		
		8.0		9.0				meter
Boom 6.50 m	11.0					9.59*	9.59*	3.1
Arm 3.10 m	10.0					6.76*	6.76*	5.2
Counterweight	9.0					5.75*	5.75*	6.6
6 500 kg	8.0					5.25*	5.25*	7.5
Shoe 600 mm	7.0	6.24*	4.93			4.95*	4.67	8.2
	6.0	6.63*	4.94			4.72*	4.16	8.8
	5.0	6.72*	4.88	5.96*	3.98	4.65*	3.84	9.2
	4.0	6.86*	4.79	6.14*	3.95	4.60*	3.62	9.5
	3.0	6.97*	4.68	6.15*	3.90	4.69*	3.50	9.6
	2.0	7.03*	4.58	6.11*	3.84	4.75*	3.44	9.7
	1.0	6.98*	4.50	5.97*	3.80	4.93*	3.46	9.6
	0 (Ground)	6.76*	4.45	5.65*	3.78	4.96*	3.54	9.5
	-1.0	6.33*	4.43	5.02*	3.80	4.64*	3.71	9.2
	-2.0	5.57*	4.47			4.19*	3.98	8.8
	-3.0	4.23*	4.23*			3.56*	3.56*	8.3
	-4.0							

# EQUIPMENT

## ZX300LC / ZX300LCN STRAIGHT BOOM

● : Standard equipment

○ : Optional equipment

### ENGINE

Aftertreatment device	●
Air cleaner double filters	●
Alternator 50 A	●
Auto idle system	●
Auto shut-down control	●
Cartridge-type engine oil filter	●
Cartridge-type fuel main filter	●
Cold fuel resistance valve	●
DEF/AdBlue® tank inlet strainer and extension filter	●
DEF/AdBlue® tank with ISO magnet adapter	●
Dry-type air filter with evacuator valve (with air filter restriction indicator)	●
Dust-proof indoor net	●
ECO/PWR mode control	●
Electrical fuel feed pump	●
Engine oil drain coupler	●
Expansion tank	●
Fan guard	●
Fuel cooler	●
Fuel pre-filter with water separator	●
Isolation-mounted engine	●
Maintenance free pre-cleaner	○
Radiator, oil cooler and intercooler	●

### HYDRAULIC SYSTEM

Auto power lift	●
Control valve with main relief valve	●
Full-flow filter	●
High mesh full flow filter with restriction indicator	○
Hose rupture valve for arm	●
Hose rupture valve for boom	●
Pilot filter	●
Power boost	●
Suction filter	●
Swing dampener valve	●
Two extra port for control valve	●
Variable reliefvalve for breaker & crusher	●
Work mode selector	●

### CAB

All-weather sound suppressed steel cab	●
AM-FM radio	●
Ashtray	●
Auto control air conditioner	●
AUX function lever (Breaker assist)	○
AUX terminal and storage	●
Cigarette lighter 24 V	●
CRES V (Center pillar reinforced structure) cab	●
Drink holder with hot & cool function	●
Electric double horn	●
Engine shut-off switch	●
Equipped with reinforced, tinted (green color) glass windows	●
Evacuation hammer	●
Fire extinguisher bracket	○
Floor mat	●
Footrest	●
Front window washer	●
Glove compartment	●
Hot & cool box	●
Intermittent windshield wipers	●
Key cylinder light	●
Laminated round glass window	○
LED room light with door courtesy	●
OPG front guard Level II (ISO10262) compliant cab	○
OPG top guard Level I (ISO10262) compliant cab	●
OPG top guard Level II (ISO10262) compliant cab	○
Pilot control shut-off lever	●
Power outlet 12 V	○
Rain guard	○
Rear tray	●
Retractable seat belt	●
ROPS (ISO12117-2) compliant cab	●
Rubber radio antenna	●
Seat : air suspension seat with heater	●
Seat adjustment part : backrest, armrest, height and angle, slide forward / back	●
Short wrist control levers	●
Sun visor (front window/side window)	○
Transparent roof with slide curtain	●
Windows on front, upper, lower and left side can be opened	●
2 speakers	●
4 fluid-filled elastic mounts	●

### MONITOR SYSTEM

Alarms:	
overheat, engine warning, engine oil pressure, alternator, minimum fuel level, hydraulic filter restriction, air filter restriction, work mode, overload, SCR system trouble, etc	●
Alarm buzzers:	
overheat, engine oil pressure, overload, SCR system trouble	●
Display of meters:	
water temperature, hour, fuel rate, clock, DEF/AdBlue® rate	●
Other displays:	
work mode, auto-idle, glow, rearview monitor, operating conditions, etc	●
32 languages selection	●

### LIGHTS

Additional boom light with cover	○
Additional cab roof front lights	○
Additional cab roof rear lights	○
Rotating lamp	○
2 working lights	●

### UPPER STRUCTURE

Batteries 2 x 135 Ah	●
Battery disconnect switch	●
Body top handrail	●
Counterweight 5 600 kg	●
Electric fuel refilling pump with auto stop and filter	●
Fuel level float	●
Hydraulic oil level gauge	●
Large size engine cover	●
Lockable fuel refilling cap	●
Lockable machine covers	●
Lockable tool box	●
Platform handrail	●
Rear view camera	●
Rear view mirror (right & left side)	●
Skid-resistant plates and handrails	●
Swing parking brake	●
Undercover	●
Utility space	●

### UNDERCARRIAGE

Bolt-on sprocket	●
Reinforced track links with pin seals	●
Shoe: 600 mm triple grouser	●
Track undercover	○
Travel direction mark on track frame	●
Travel motor covers	●
Travel parking brake	●
Upper and lower rollers	●
3 track guards (each side) and hydraulic track adjuster	●
4 tie down hooks	●

### FRONT ATTACHMENTS

Casted bucket link A	●
Centralized lubrication system	●
Dirt seal on all bucket pins	●
Flanged pin	●
HN bushing	●
Reinforced resin thrust plate	●
WC (tungsten-carbide) thermal spraying	●
Welded bucket link A	○

### ATTACHMENTS

Accessories for 2 speed selector	○
Additional pump (30 L/min)	○
Assist piping	○
Attachment basic piping	●
Breaker and crusher piping	●
Parts for breaker and crusher	●
Pilot accumulator	○

### MISCELLANEOUS

Global e-Service	●
Onboard information controller	●
Standard tool kit	●
Theft prevention system*	○

Standard and optional equipment may vary by country, so please consult your Hitachi dealer for details.

\* Hitachi Construction Machinery cannot be held liable for theft, any system will just minimize the risk of theft.

# SPECIFICATIONS

## ZX350LC / ZX350LCN STRAIGHT BOOM

### ENGINE

Model .....	Isuzu AQ-6HK1X
Type .....	4-cycle water-cooled, common rail direct injection
Aspiration .....	Variable geometry turbocharged, intercooled, cooled EGR
Aftertreatment .....	DOC and SCR system
No. of cylinders .....	6
Rated power	
ISO 14396 .....	210 kW at 1 900 min <sup>-1</sup>
ISO 9249, net .....	202 kW at 1 900 min <sup>-1</sup>
SAE J1349, net .....	202 kW at 1 900 min <sup>-1</sup>
Maximum torque .....	1 080 Nm at 1 500 min <sup>-1</sup>
Piston displacement .....	7.790 L
Bore and stroke .....	115 mm x 125 mm
Batteries .....	2 x 12 V / 135 Ah

### HYDRAULIC SYSTEM

#### Hydraulic Pumps

Main pumps .....	3 variable displacement axial piston pumps
Maximum oil flow .....	2 x 288 L/min 1 x 260 L/min
Pilot pump .....	1 gear pump
Maximum oil flow .....	36.4 L/min

#### Hydraulic Motors

Travel .....	2 variable displacement axial piston motors
Swing .....	1 axial piston motor

#### Relief Valve Settings

Implement circuit .....	34.3 MPa
Swing circuit .....	32.4 MPa
Travel circuit .....	34.3 MPa
Pilot circuit .....	3.9 MPa
Power boost .....	38.0 MPa

#### Hydraulic Cylinders

	Quantity	Bore	Rod diameter
Boom	2	145 mm	100 mm
Arm	1	170 mm	115 mm
Bucket	1	140 mm	95 mm

### UPPERSTRUCTURE

#### Revolving Frame

D-section frame for resistance to deformation.

#### Swing Device

Axial piston motor with planetary reduction gear is bathed in oil. Swing circle is single-row. Swing parking brake is spring-set/hydraulic-released disc type.

Swing speed .....	9.7 min <sup>-1</sup>
Swing torque .....	120 kNm

#### Operator's Cab

Independent spacious cab, 1 005 mm wide by 1 675 mm high, conforming to ISO\* Standards.

\* International Standardisation Organisation

### UNDERCARRIAGE

#### Tracks

Heat-treated connecting pins with dirt seals. Hydraulic (grease) track adjusters with shock-absorbing recoil springs.

#### Numbers of Rollers and Shoes on Each Side

Upper rollers .....	2
Lower rollers .....	8
Track shoes .....	48
Track guards .....	3

#### Travel Device

Each track driven by 2-speed axial piston motor. Parking brake is spring-set/hydraulic-released disc type. Automatic transmission system: High-Low.

Travel speeds .....	High : 0 to 5.0 km/h Low : 0 to 3.2 km/h
---------------------	---

Maximum traction force ... 298 kN

Gradeability .....

70% (35 degree) continuous

### SOUND LEVEL

Sound level in cab according to ISO 6396 ..... LpA 69 dB(A)

External sound level according to ISO 6395 and

EU Directive 2000/14/EC ..... LwA 105 dB(A)

### SERVICE REFILL CAPACITIES

Fuel tank .....	630.0 L
Engine coolant .....	43.0 L
Engine oil .....	48.0 L
Swing device .....	17.0 L
Travel device (each side) .....	9.2 L
Hydraulic system .....	340.0 L
Hydraulic oil tank .....	180.0 L
DEF/AdBlue® tank .....	70.0 L

## WEIGHTS AND GROUND PRESSURE

### ZX350LC STRAIGHT BOOM:

Equipped with 7.00 m straight boom, 3.20 m arm and 1.40 m<sup>3</sup> bucket (SAE, PCSA heaped), 8 800 kg counterweight.

Shoe type	Shoe width	Operating weight	Ground pressure
Triple grouser	600 mm	36 700 kg	79 kPa (0.81 kgf/cm <sup>2</sup> )
	700 mm	37 100 kg	68 kPa (0.70 kgf/cm <sup>2</sup> )
	800 mm	37 500 kg	60 kPa (0.62 kgf/cm <sup>2</sup> )
	900 mm	37 900 kg	54 kPa (0.56 kgf/cm <sup>2</sup> )

### ZX350LCN STRAIGHT BOOM:

Equipped with 7.00 m straight boom, 3.20 m arm and 1.40 m<sup>3</sup> bucket (SAE, PCSA heaped), 8 800 kg counterweight.

Shoe type	Shoe width	Operating weight	Ground pressure
Triple grouser	600 mm	36 500 kg	78 kPa (0.80 kgf/cm <sup>2</sup> )
	700 mm	36 900 kg	68 kPa (0.70 kgf/cm <sup>2</sup> )

## Components weight

	Weight
Counterweight	8 800 kg
Straight boom (with arm cylinder)	3 700 kg
3.20 m arm (with bucket cylinder)	1 610 kg
1.40 m <sup>3</sup> bucket	1 170 kg

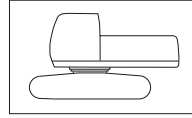
## BUCKET AND ARM DIGGING FORCE

### ZAXIS 350LC / ZAXIS 350LCN

Arm length	3.20 m
Bucket digging force* ISO	246 kN (25 100 kgf)
Bucket digging force* SAE : PCSA	214 kN (21 800 kgf)
Arm crowd force* ISO	185 kN (18 900 kgf)
Arm crowd force* SAE : PCSA	177 kN (18 100 kgf)

\* At power boost

## Basic Machine Weight and Overall width



Excluding front end attachment, fuel, hydraulic oil and coolant etc.

Including counterweight.

### ZX350LC

Shoe width	Weight	Overall width
600 mm	27 100 kg	3 190 mm
700 mm	27 500 kg	3 290 mm
800 mm	27 900 kg	3 390 mm
900 mm	28 300 kg	3 490 mm

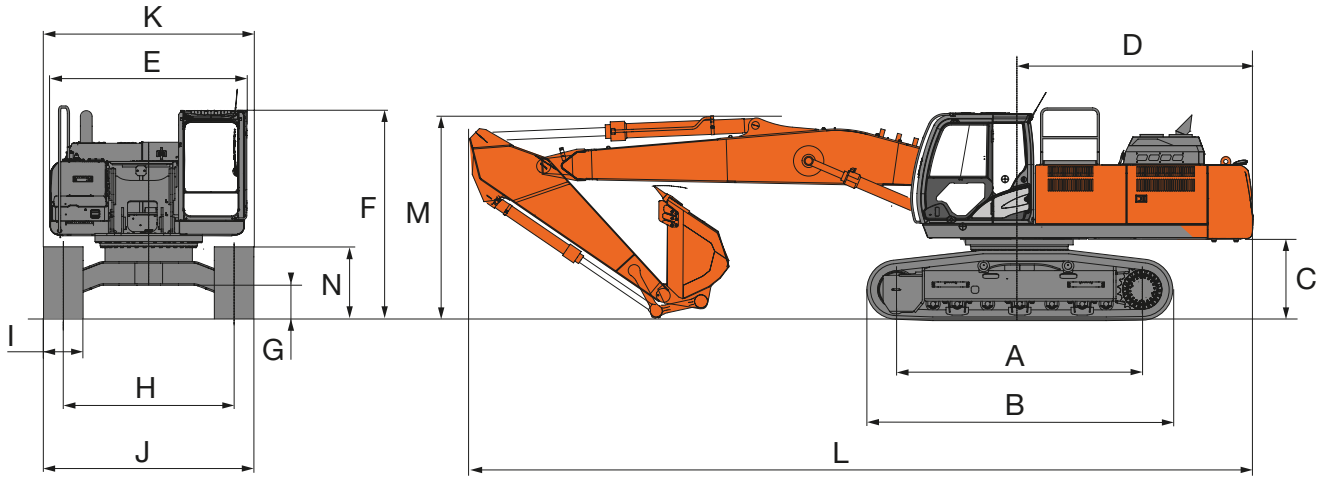
### ZX350LCN

Shoe width	Weight	Overall width
600 mm	27 000 kg	2 990 mm
700 mm	27 400 kg	3 090 mm

# SPECIFICATIONS

## ZX350LC / ZX350LCN STRAIGHT BOOM

### DIMENSIONS



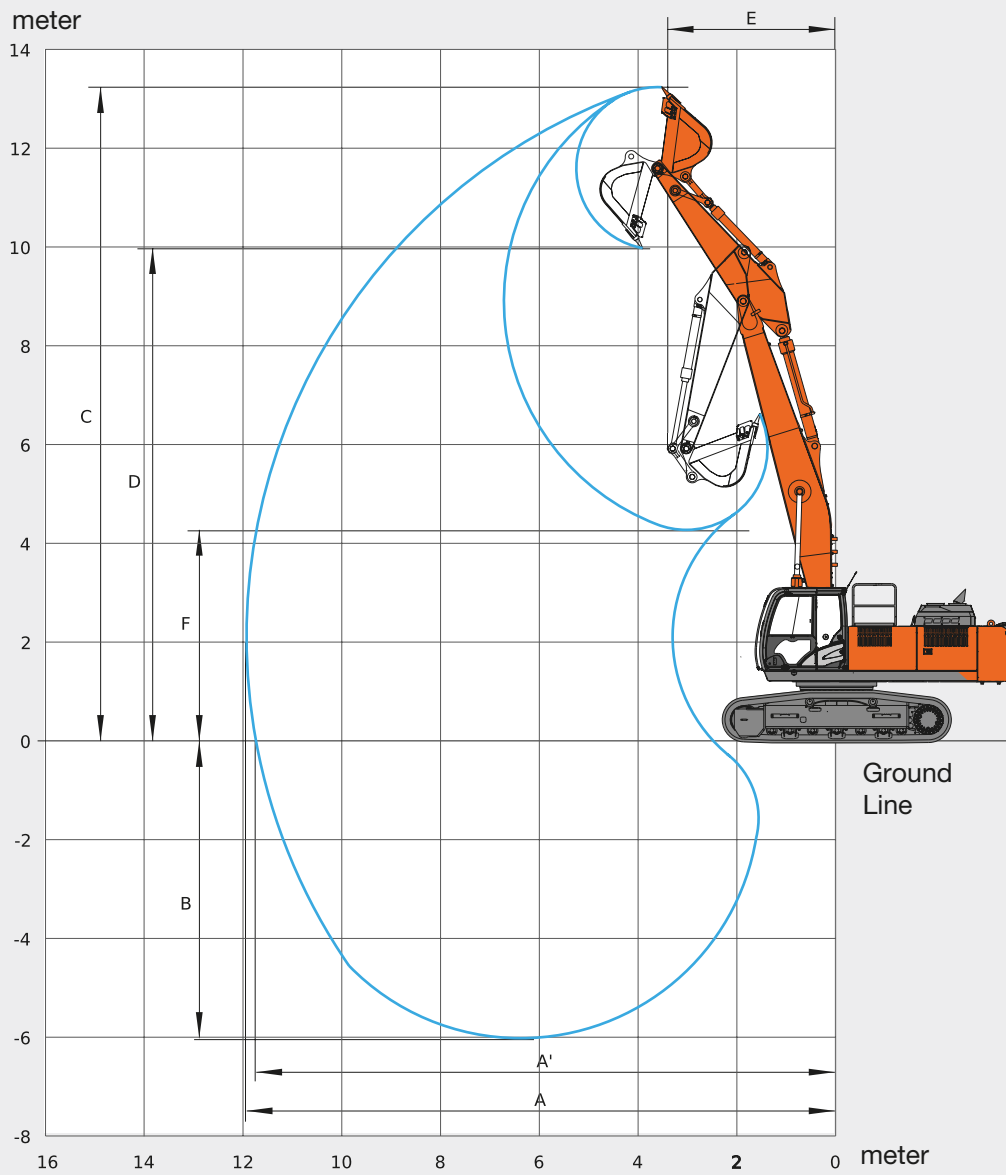
Unit: mm

	ZX350LC STRAIGHT BOOM	ZX350LCN STRAIGHT BOOM
A Distance between tumbler	4 050	4 050
B Undercarriage length	4 950	4 950
*C Counterweight clearance	1 160	1 160
D Rear-end swing radius	3 600	3 600
E Overall width of upperstructure	2 990	2 990
F Overall height of cab	3 150	3 150
*G Min. ground clearance	500	500
H Track gauge	2 590	2 390
I Track shoe width	600 / 700 / 800 / 900	600 / 700
J Undercarriage width	3 190 / 3 290 / 3 390 / 3 490	2 990 / 3 090
K Overall width	3 190 / 3 290 / 3 390 / 3 490	2 990 / 3 090
L Overall length	11 875	11 875
M Overall height of boom	3 150	3 150
N Track height with triple grouser shoes	1 070	1 070

•\*: Excluding track shoe lug



## WORKING RANGES



Unit: mm

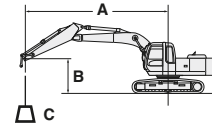
	ZX350LC / ZX350LCN STRAIGHT BOOM
A Max. digging reach	11 910
A' Max. digging reach (on ground)	11 715
B Max. digging depth	6 015
C Max. cutting height	13 240
D Max. dumping height	9 980
E Min. swing radius	3 390
F Min. dumping height	4 280

- Excluding track shoe lug

# LIFTING CAPACITIES

## Metric measure

- Notes: 1. Ratings are based on ISO 10567.  
 2. Lifting capacity of the ZAXIS series does not exceed 75% of tipping load with the machine on firm, level ground or 87% full hydraulic capacity.  
 3. The load point is the center-line of the bucket pivot mounting pin on the arm.  
 4. \* Indicates load limited by hydraulic capacity.  
 5. 0 m = Ground.  
 For lifting capacities, subtract bucket and quick hitch weight from lifting capacities.



A: Load radius  
 B: Load point height  
 C: Lifting capacity

### ZX350LC STRAIGHT BOOM

Rating over-front Rating over-side or 360 degrees Unit: 1 000 kg

Conditions	Load point height m	Load radius m									
		3.0		4.0		5.0		6.0		7.0	
Boom 7.00 m Arm 3.20 m Counterweight 8 800 kg Shoe 600 mm	10.0					11.13*	11.28*	10.19*	10.19*		
	9.0							9.83*	9.83*	9.10*	9.10*
	8.0					10.05*	10.05*	9.86*	9.86*	8.99*	8.72
	7.0					10.22*	10.22*	10.12*	10.12*	9.10*	8.65
	6.0			11.25*	11.25*	11.85*	11.85*	10.57*	10.57*	9.35*	8.51
	5.0					13.23*	13.23*	11.13*	10.49	9.68*	8.31
	4.0					14.21*	13.18	11.71*	10.12	10.02*	8.08
	3.0					14.92	12.57	12.16*	9.75	10.29*	7.85
	2.0					14.78*	12.14	12.35*	9.45	10.41*	7.65
	1.0					12.95*	11.90	12.22*	9.25	10.32*	7.50
	0 (Ground)					13.78*	11.82	11.73*	9.14	9.98*	7.40
	-1.0			8.65*	8.65	12.56*	11.84	10.91*	9.11	9.36*	7.37
-2.0			11.67*	11.67*	11.02*	11.02*	9.75*	9.15	8.41*	7.39	
-3.0			9.41*	9.41*	9.13*	9.13*	8.21*	8.21*	7.07*	7.07*	
-4.0					6.78*	6.78*	6.18*	6.18*	5.16*	5.16*	

Conditions	Load point height m	Load radius m						At max. reach		
		8.0		9.0		10.0				meter
Boom 7.00 m Arm 3.20 m Counterweight 8 800 kg Shoe 600 mm	10.0							8.02*	8.02*	6.5
	9.0							7.23*	7.23*	7.5
	8.0	8.36*	6.93					6.65*	6.37	8.4
	7.0	8.32*	6.95					6.40*	5.64	9.0
	6.0	8.43*	6.89	7.70*	5.66			6.30*	5.15	9.5
	5.0	8.60*	6.77	7.75*	5.61			6.19*	4.82	9.8
	4.0	8.78*	6.63	7.81*	5.54	6.91*	4.66	6.09*	4.60	10.1
	3.0	8.92*	6.48	7.84*	5.45	6.85*	4.63	6.14*	4.47	10.2
	2.0	8.96*	6.35	7.80*	5.37	6.69*	4.60	6.32*	4.43	10.3
	1.0	8.85*	6.24	7.62*	5.30	6.37*	4.57	6.03*	4.46	10.2
	0 (Ground)	8.54*	6.18	7.26*	5.26	5.75*	4.58	5.68*	4.56	10.0
	-1.0	7.98*	6.15	6.64*	5.26			5.26*	4.76	9.8
-2.0	7.09*	6.18	5.60*	5.31			4.69*	4.69*	9.4	
-3.0	5.75*	5.75*					3.95*	3.95*	8.9	

### ZX350LCN STRAIGHT BOOM

Rating over-front Rating over-side or 360 degrees Unit: 1 000 kg

Conditions	Load point height m	Load radius m									
		3.0		4.0		5.0		6.0		7.0	
Boom 7.00 m Arm 3.20 m Counterweight 8 800 kg Shoe 600 mm	10.0					11.13*	11.13*	10.19*	10.19*		
	9.0							9.83*	9.83*	9.10*	8.04
	8.0					10.05*	10.05*	9.86*	9.86*	8.99*	8.10
	7.0					10.22*	10.22*	10.12*	10.12*	9.10*	8.04
	6.0			11.25*	11.25*	11.85*	11.85*	10.57*	10.03	9.35*	7.90
	5.0					13.23*	12.75	11.13*	9.71	9.68*	7.70
	4.0					14.21*	12.12	11.71*	9.34	10.02*	7.48
	3.0					14.92*	11.52	12.16*	8.98	10.29*	7.25
	2.0					14.78*	11.10	12.35*	8.69	10.41*	7.05
	1.0					12.95*	10.87	12.22*	8.49	10.32*	6.90
	0 (Ground)					13.78*	10.79	11.73*	8.38	9.98*	6.81
	-1.0			8.65*	8.65*	12.56*	10.81	10.91*	8.36	9.36*	6.78
-2.0			11.67*	11.67*	11.02*	10.90	9.75*	8.40	8.41*	6.80	
-3.0			9.41*	9.41*	9.13*	9.13*	8.21*	8.21*	7.07*	6.88	
-4.0					6.78*	6.78*	6.18*	6.18*	5.16*	5.16*	

Conditions	Load point height m	Load radius m						At max. reach		
		8.0		9.0		10.0				meter
Boom 7.00 m Arm 3.20 m Counterweight 8 800 kg Shoe 600 mm	10.0							8.02*	8.02*	6.5
	9.0							7.23*	7.02	7.5
	8.0	8.36*	6.44					6.65*	5.91	8.4
	7.0	8.32*	6.46					6.40*	5.22	9.0
	6.0	8.43*	6.39	7.70*	5.25			6.30*	4.77	9.5
	5.0	8.60*	6.28	7.75*	5.20			6.19*	4.45	9.8
	4.0	8.78*	6.14	7.81*	5.12	6.91*	4.31	6.09*	4.25	10.1
	3.0	8.92*	5.99	7.84*	5.03	6.85*	4.28	6.14*	4.13	10.2
	2.0	8.96*	5.86	7.80*	4.95	6.69*	4.24	6.32*	4.09	10.3
	1.0	8.85*	5.76	7.62*	4.89	6.37*	4.22	6.03*	4.11	10.2
	0 (Ground)	8.54*	5.69	7.26*	4.85	5.76*	4.22	5.68*	4.21	10.0
	-1.0	7.98*	5.67	6.64*	4.85			5.26*	4.39	9.8
-2.0	7.09*	5.69	5.60*	4.90			4.69*	4.68	9.4	
-3.0	5.75*	5.75*					3.95*	3.95*	8.9	

# EQUIPMENT

## ZX350LC / ZX350LCN STRAIGHT BOOM

● : Standard equipment

○ : Optional equipment

### ENGINE

Aftertreatment device	●
Air cleaner double filters	●
Alternator 50 A	●
Auto idle system	●
Auto shut-down control	●
Cartridge-type engine oil filter	●
Cartridge-type fuel main filter	●
Cold fuel resistance valve	●
DEF/AdBlue® tank inlet strainer and extension filter	●
DEF/AdBlue® tank with ISO magnet adapter	●
Dry-type air filter with evacuator valve (with air filter restriction indicator)	●
Dust-proof indoor net	●
ECO/PWR mode control	●
Electrical fuel feed pump	●
Engine oil drain coupler	●
Expansion tank	●
Fan guard	●
Fuel cooler	●
Fuel pre-filter with water separator	●
Isolation-mounted engine	●
Maintenance free pre-cleaner	○
Radiator, oil cooler and intercooler	●

### HYDRAULIC SYSTEM

Auto power lift	●
Control valve with main relief valve	●
Full-flow filter	●
High mesh full flow filter with restriction indicator	○
Hose rupture valve for arm	●
Hose rupture valve for boom	●
Pilot filter	●
Power boost	●
Suction filter	●
Swing dampener valve	●
Two extra port for control valve	●
Variable hydraulic fan for oil cooler	●
Variable reliefvalve for breaker & crusher	●
Work mode selector	●

### CAB

All-weather sound suppressed steel cab	●
AM-FM radio	●
Ashtray	●
Auto control air conditioner	●
AUX function lever (Breaker assist)	○
AUX terminal and storage	●
Cigarette lighter 24 V	●
CRES V (Center pillar reinforced structure) cab	●
Drink holder with hot & cool function	●
Electric double horn	●
Engine shut-off switch	●
Equipped with reinforced, tinted (green color) glass windows	●
Evacuation hammer	●
Fire extinguisher bracket	○
Floor mat	●
Footrest	●
Front window washer	●
Glove compartment	●
Hot & cool box	●
Intermittent windshield wipers	●
Key cylinder light	●
Laminated round glass window	○
LED room light with door courtesy	●
OPG front guard Level II (ISO10262) compliant cab	○
OPG top guard Level I (ISO10262) compliant cab	●
OPG top guard Level II (ISO10262) compliant cab	○
Pilot control shut-off lever	●
Power outlet 12 V	○
Rain guard	○
Rear tray	●
Retractable seat belt	●
ROPS (ISO12117-2) compliant cab	●
Rubber radio antenna	●
Seat : air suspension seat with heater	●
Seat adjustment part : backrest, armrest, height and angle, slide forward / back	●
Short wrist control levers	●
Sun visor (front window/side window)	○
Transparent roof with slide curtain	●
Windows on front, upper, lower and left side can be opened	●
2 speakers	●
4 fluid-filled elastic mounts	●

### MONITOR SYSTEM

Alarms: overheat, engine warning, engine oil pressure, alternator, minimum fuel level, hydraulic filter restriction, air filter restriction, work mode, overload, SCR system trouble, etc	●
Alarm buzzers: overheat, engine oil pressure, overload, SCR system trouble	●
Display of meters: water temperature, hour, fuel rate, clock, DEF/AdBlue® rate	●
Other displays: work mode, auto-idle, glow, rearview monitor, operating conditions, etc	●
32 languages selection	●

### LIGHTS

Additional boom light with cover	○
Additional cab roof front lights	○
Additional cab roof rear lights	○
Rotating lamp	○
2 working lights	●

### UPPER STRUCTURE

Batteries 2 x 135 Ah	●
Battery disconnect switch	●
Body top handrail	●
Counterweight 7 600 kg	●
Electric fuel refilling pump with auto stop and filter	●
Fuel level float	●
Hydraulic oil level gauge	●
Lockable fuel refilling cap	●
Lockable machine covers	●
Lockable tool box	●
Platform handrail	●
Rear view camera	●
Rear view mirror (right & left side)	●
Skid-resistant plates and handrails	●
Swing parking brake	●
Undercover	●
Utility space	●

### UNDERCARRIAGE

Bolt-on sprocket	●
Reinforced track links with pin seals	●
Shoe: 600 mm triple grouser	●
Track undercover	○
Travel direction mark on track frame	●
Travel motor covers	●
Travel parking brake	●
Upper and lower rollers	●
3 track guards (each side) and hydraulic track adjuster	●
4 tie down hooks	●

### FRONT ATTACHMENTS

Casted bucket link A	●
Centralized lubrication system	●
Dirt seal on all bucket pins	●
Flanged pin	●
HN bushing	●
Reinforced resin thrust plate	●
WC (tungsten-carbide) thermal spraying	●
Welded bucket link A	○

### ATTACHMENTS

Accessories for 2 speed selector	○
Additional pump (30 L/min)	○
Assist piping	○
Attachment basic piping	●
Breaker and crusher piping	●
Parts for breaker and crusher	●
Pilot accumulator	○

### MISCELLANEOUS

Global e-Service	●
Onboard information controller	●
Standard tool kit	●
Theft prevention system*	○

Standard and optional equipment may vary by country, so please consult your Hitachi dealer for details.

\* Hitachi Construction Machinery cannot be held liable for theft, any system will just minimize the risk of theft.

Prior to operating this machine, including satellite communication system, in a country other than a country of its intended use, it may be necessary to make modifications to it so that it complies with the local regulatory standards (including safety standards) and legal requirements of that particular country. Please do not export or operate this machine outside the country of its intended use until such compliance has been confirmed. Please contact your Hitachi dealer in case of questions about compliance.

These specifications are subject to change without notice. Illustrations and photos show the standard models, and may or may not include optional equipment, accessories, and all standard equipment with some differences in color and features. Before use, read and understand the Operator's Manual for proper operation.

